

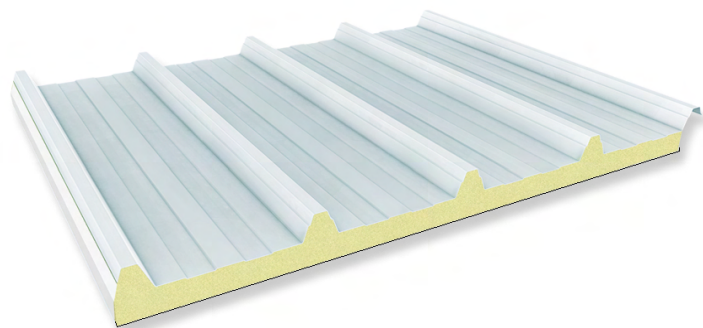
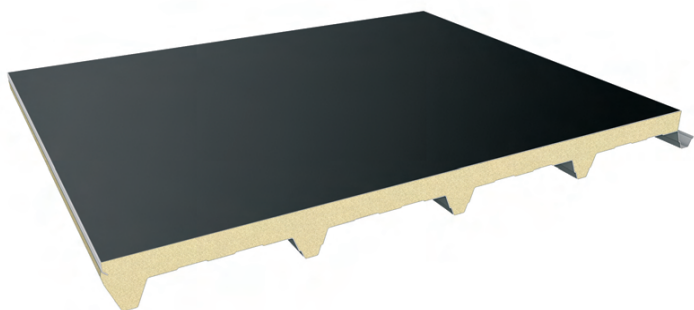
Mono PENTA Deck

Pannelli copertura in PUR / PIR con supporto esterno in cartongfetro bitumato

Roof panels with PUR / PIR insulation and external support in bitumized felt paper

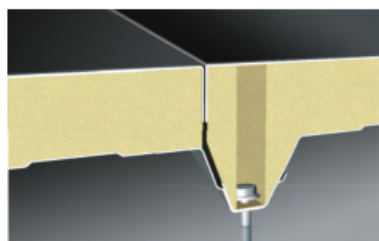
Dachpaneele, isoliert mit PUR / PIR Schaum und mit Außenseite aus bitumen-Filzkarton

Panneaux de couverture avec isolation en PUR / PIR et avec le support extérieure en carton-feutre bitumé

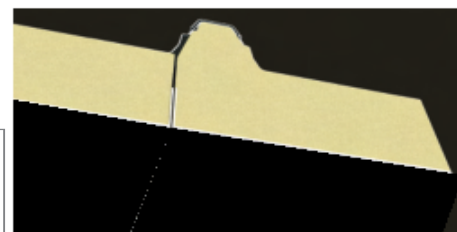
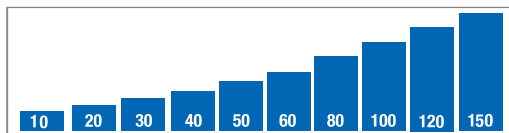


PARTICOLARE DEL GIUNTO
RUIP V ÖÖVÖĀŠ

PARTICOLARE DEL GIUNTO
RUIP V ÖÖVÖĀŠ



- Spessore (mm)
- Thickness
- Plattenstärke
- Epaisseur



Ü] ^••[^ Pæ } ^ Pæ ^ V@& } ^•• ž { á	Trasmittanza Termica / Thermal Transmittance		Öönd~ ttiçite termica dichiarata / Declared thermal cond~ ctiçit~ in accordo/ according to WP QÖP FI í €J AĒ€ ÉAĒ€ λo Ž' /m²Sá
	in accordo/ according to WP QÖP FI í €J AĒ€ ÉAĒ€ WĒŸ /m²SQ	in accordo/ according to WP QÖP QÜ Ū JI Ī WĒŸ /m²SQ	
1\$	2,22	1,4\$	\$,\$29
20	1,2	,\$94	
30	0,89	0,+1	
40	0,6	0,5+	
50	0,5*	0,4,	
60	0,4+	0,41	
80	0,34	0,31	\$,\$2
100	0,2,	0,25	
120	,\$22	,\$21	\$,\$2+
150	,\$1,	,\$1Ī	

* I valori di trasmittanza termica sono calcolati in accordo alla UNI EN ISO 6946, sono stati considerati gli spessori medi del PUR / PIR e non includono i ponti termici del giunto longitudinale.
The thermal transmittance values are calculated in accordance whit UNI EN ISO 6946, the average thicknesses of the PUR / PIR have been considered and do not include the thermal briges of the longitudinal joint.

DISEGNO TECNICO / SECTION DETAIL

